

# **Research Report**

## **Validation of o-Chlorostyrene using SKC Passive Sampler 575-003**

### **Abstract**

A sampling method for o-chlorostyrene in air has been validated for concentration levels from 0.5 to 120 ppm and for exposure times from 15 minutes to 8 hours. The 575-003 passive sampler used has a sample medium of Anasorb® 727. Desorption was with carbon disulfide and analysis by gas chromatography with flame ionization detection (GC-FID).

The analytical recovery over the range of 0.5 to 120 ppm (16 to 3240 mg) was variable, but >75% for all loadings. A desorption efficiency curve was used to correct results from the other experiments.

The sampling rate is 9.8 ml/min. Samples can be taken from 10° C to 40° C.

Minimum recommended sampling time is 15 minutes. Maximum recommended sampling time is 8 hours.

Samples can be stored for up to 21 days at room temperature or in a refrigerator (4° C) without loss of sample.

A full validation of styrene was done according to NIOSH protocol<sup>1</sup> and a partial NIOSH validation by the bi-level procedure was conducted for o-chlorostyrene and other higher members of this homologous series.

### **Authors**

Daniel L. Fiorito  
Martin Harper  
Lloyd V. Guild

Compiled by Martin Harper

**SKC Inc.**  
**863 Valley View Road**  
**Eighty Four, PA 15330 USA**

# Importance of Passive Sampler Validation

There are distinct differences between a passive sampler and a sample tube.

The most important difference is that a passive sampler does not have a foolproof back up section that guarantees that all of the chemical hazard has been collected and that there is a true and total measure of worker exposure.

Secondly, the sorbent medium is exposed to the external environment and this poses problems not associated with a sample tube where the air sample passes into the sample tube directly contacting the sorbent medium. That is why it is critical to use a strong sorbent medium in passive samplers to assure complete capture and retention.

Therefore, for compliance purposes a passive sampler must be laboratory tested and validated under worst case field conditions for all factors that affect sampling accuracy as well as interaction between affects.

NIOSH has laid out a rigorous and complete validation protocol to assure that the sample collected is a complete and true measure of worker exposure. The following are the factors that the NIOSH protocol addresses:

## Factors That Affect Complete Sample Uptake & Retention

Chemical hazard concentration	Temperature
Time of exposure	Humidity
Sorbent capacity	Interfering chemicals
Sorbent strength	Reverse diffusion from sorbent surface
Wind velocity	Sampler orientation
Interaction of any of the above factors	

Validation by NIOSH protocol assures that the sample results are a true and total measure of worker exposure.

**SKC validation follows the NIOSH Validation Protocol.  
Certain experiments may have been modified for practical  
reasons, or to provide more rigorous tests.**

## User Responsibility

The sampler manager should be a professional trained in air sampling and aware of the limitations and advantages of the method being used. It is also very helpful if he or she has a working relationship with the analytical techniques being used and the requirements of record-keeping.

In accordance with ASTM D6346-98 and ANSI 104-1998 standards, use of samplers outside the range of conditions used in these validation tests does not assure accurate results and is not recommended. It is the user's responsibility to determine whether the conditions of the sampling site fall within the range tested. For bi-level validations it can be assumed that the applicable range is that used for testing the lower member of the homologous series.

Workers should be trained in the use of the equipment. In collecting the sample, care should be taken in the location of the sampler on the worker. It is to be openly exposed near the breathing zone. Exact times of exposure must be recorded. No moisture condensation should occur on the sampler. Workers should not be allowed to touch the sampler as they may transfer contamination. Particular attention must be paid to environments where liquid aerosols may be present, since droplets of liquid solvent on the sampler face will invalidate the sample. Any other field conditions outside of the limits used in the NIOSH protocol, such as extreme temperatures or stagnant air conditions that might affect the sampler operation, should be recorded.

Good laboratory practice must be followed. Follow the operating instructions for the desorption time needed for complete desorption. Use only the correct desorption instrument. If gas chromatography is used as the analysis method, base line separation should occur with the chemical hazard of interest and proper instrument calibration procedures used.

NIOSH or OSHA analytical methods should be used.

# Summary of NIOSH Validation Protocol<sup>1</sup>

Characteristic	Experimental Design	Interpretation of Results														
1. Analytical recovery	Spike 16 samplers, 4 at each of 4 concentration levels (0.1, 0.5, 1.0 & 2.0 x STD). Equilibrate about 12 h and analyze.	The higher 3 levels require ≥ 75% recoveries with $S_r \leq 0.1$ .														
2. Sampling rate and capacity	Expose samplers (4 per time period) for 1/8, 1/4, 1/2, 1, 2, 4, 6, 8, 10 & 12 h to 2 x STD, 80% RH, and 20 cm/s face velocity. Plot concentration vs. time exposed. Determine MRST and SRST.	Verify sampling rate. State useful range at 80% RH & 2 x STD. Capacity - sample loading corresponding to the downward break in conc. vs. time curve from constant concentration. SRST - time linear uptake rate achieved. MRST-0.67 x capacity (1 analyte). MRST-0.33 x capacity (multi-analyte).														
3. Reverse diffusion	Expose 20 samplers to 2 x STD, 80% RH for 0.5 x MRST. Remove and analyze 10 samplers. Expose others to 80% RH and no analyte for remainder of MRST.	Require ≤ 10% difference between means of the two sampler sets at the 95% CL.														
4. Storage stability	Expose 3 sets of samplers (10 per set) at 80% RH, 1 x STD, and 0.5 x MRST. Analyze first set within 1 day, second set after 2 weeks storage at room temperature, third set after 2 weeks storage at about 5° C.	Require ≤ 10% difference at the 95% CL between means of stored sampler sets and set analyzed within 1 day.														
5. Factor effects	Test the following factors at the levels shown. Use a 16-run fractional factorial design (4 samplers per exposure) to determine significant factors. <table><tr><th>Factor</th><th>Test Levels</th></tr><tr><td>Analyte concentration</td><td>0.1 &amp; 2 x STD</td></tr><tr><td>Exposure time</td><td>SRST &amp; MRST</td></tr><tr><td>Face velocity</td><td>10 &amp; 150 cm/s</td></tr><tr><td>Relative humidity</td><td>10 &amp; 80% RH</td></tr><tr><td>Interferant</td><td>0 &amp; 1 x STD</td></tr><tr><td>Sampler orientation</td><td>parallel &amp; perpendicular (to airflow)</td></tr></table>	Factor	Test Levels	Analyte concentration	0.1 & 2 x STD	Exposure time	SRST & MRST	Face velocity	10 & 150 cm/s	Relative humidity	10 & 80% RH	Interferant	0 & 1 x STD	Sampler orientation	parallel & perpendicular (to airflow)	Indicate any factor that causes a statistically significant difference in recovery at the 95% CL. Investigate further to characterize its effect.
Factor	Test Levels															
Analyte concentration	0.1 & 2 x STD															
Exposure time	SRST & MRST															
Face velocity	10 & 150 cm/s															
Relative humidity	10 & 80% RH															
Interferant	0 & 1 x STD															
Sampler orientation	parallel & perpendicular (to airflow)															
6. Temperature effects	Expose samplers (10 per temp) to 0.5 x STD at 10, 25, & 40° C for 0.5 x MRST.	Define temperature effect and verify correction factor, if provided.														
7. Accuracy and precision	Calculate precision and bias for samplers (10 per conc. level) exposed to 0.1, 0.5, 1 & 2 x STD at 80% RH for ≥ MRST. Use data from previous experiments.	Require bias within ± 25% of true value at 95% CL with precision $S_r \leq 10.5\%$ for 0.5, 1, & 2 x STD levels.														

## Summary of NIOSH Validation Protocol (cont.)

Characteristic	Experimental Design	Interpretation of Results
<b>8. Shelf-life</b>	Observe samplers throughout evaluation for changes in blank values, physical appearance, etc. Test samplers from more than one lot, if possible.	Note shelf storage time at which changes begin to occur. Indicate whether correctable or not.
<b>9. Behavior in the field</b>	Consider problems not predictable from laboratory experiments.	Record temperature, humidity, air velocity, other contaminants, etc.
<i>Area sampling:</i>	Expose passive samplers and independent method samplers (13 each) to the same environment.	Calculate precision and bias. Compare with laboratory results.
<i>Personal sampling:</i>	Conduct personal sampling with $\geq 25$ sampler pairs. Place pairs of passive samplers and independent samplers on the same lapel of each worker.	Calculate bias. Compare with area sampling and laboratory results.

## Bi-level Validation (previously designated by SKC as 5B)

Passive Sampler validation is essential to ensure accurate determination of airborne chemical levels. To assist manufacturers and users, the National Institute for Occupational Safety and Health (NIOSH), the Health and Safety Executive (HSE)<sup>2</sup>, and the Comité Européen de Normalisation (CEN)<sup>3,4</sup> have developed comprehensive protocols for the validation of passive samplers.

Bi-level validation can also be used to assure that a sample gives the total and complete exposure to a chemical hazard.

Bi-level validation is only for a series of chemically-related compounds, i.e., members of a homologous series. Bi-level validation includes a full protocol validation on key compounds followed by a partial validation on other members of the series.

The concept of a bi-level validation of chemically-related compounds for a given sorbent and sampler design is based on the following premises and has been studied by Guild et al.<sup>5</sup>

1. Full validation by NIOSH, HSE, or CEN protocol of a lower member of the series is essential to assure accurate, routine sampling under all field conditions without the need for error-corrective measures.
2. Capacity and retentivity are directly related to the affinity of a sorbent for a specific chemical. For a series of chemically-related compounds, the affinity of a sorbent for a particular member compound will increase with the molecular weight and boiling point of the member. If a sorbent is suitable for collecting a low molecular weight member of the series, it will be suitable for the higher molecular weight members of the series as well.
3. For chemically-stable compounds, sample loss by reverse diffusion and loss during storage are inversely related to the affinity of the sorbent for the adsorbate. Therefore, compounds with higher molecular weights and boiling points will exhibit less loss by reverse diffusion and storage. Again, if a sorbent is suitable for a member with a lower molecular weight and boiling point, it will be suitable for the higher members.
4. The linearity of uptake with time is also a function of sorbent affinity and capacity. Uptake becomes increasingly linear as the molecular weight and boiling point increases and the sample load decreases. (Protocol validation requires study of concentrations ranging from 0.1 to 2.0 times the Permissible Exposure Limit [PEL].)

## Bi-level Validation (cont.)

5. Temperature affects the accuracy of passive samplers in two different ways; the relation of temperature to adsorption affinity and the relation of the molecular diffusion of the sample to the sampler.
  - a. It is well known that the affinity of a sorbent for a chemical decreases with increasing temperature. If the sorbent has adequate affinity for a low molecular weight member of the series at 40° C (the maximum temperature tested under protocol), it will also be adequate at lower temperatures and for higher molecular weight members of the series.
  - b. The effects of temperature on sample uptake follow established mathematical relationships and are not significant compared to other random sampling errors.
6. The effects of humidity will be most pronounced for lower members of the series because of competition or modification of sorbent affinity.
7. Adsorption affinity decreases with the mass adsorbed. Therefore, the “key” member chosen for full validation should have a high Permissible Exposure Limit (PEL) relative to the other members of the series.
8. Air velocity and sampler orientation effects are functions of sampler design and will be similar for all compounds.
9. If all the factors affecting sampling accuracy improve with increasing molecular weight and boiling point and there are no interacting effects of these parameters with a lower member of the series, then there will be no interacting effects with higher members.
10. The accuracy of a sampler is determined by its bias and precision. For most passive samplers, the bias is the result of the deviation of the calculated sample rate from the actual rate. By determining the sample rate under known conditions at 1 PEL, the bias is reduced to zero. Therefore, measured sample rates should be determined for all compounds.
11. The precision of a sampler is a function of the consistency of sampler manufacture and the analytical procedures in the laboratory.
12. Analytical recovery tends to decrease with increased sorbent affinity and is a function of the chemical compound, the concentration, and the sorbent. Therefore, analytical recovery should be determined for every compound over the concentration range of 0.1 to 2.0 PEL, as recommended by protocol.

**Conclusion:** The above premises have been verified, peer-reviewed, and published.<sup>5</sup> Therefore, Bi-level validation (5B) is an excellent way to assure accurate performance of a passive sampler for higher members of a homologous series.

## **Comments on the Relationship Between the NIOSH and CEN Diffusive Sampler Evaluation Protocols**

The Comité Européen de Normalisation (CEN) is engaged in writing standards for air sampling equipment that include the limitations on precision and accuracy (EN 482) and the required performance tests. In the case of passive samplers the relevant performance test standard is EN 838.

The precision and accuracy requirements in EN 482 are based on the use that will be made of the results, principally for either problem identification or compliance purposes. The standard for compliance purposes is a combined precision and accuracy of less than 30%, which is a looser standard than the 25% in the NIOSH protocol.

The performance tests are closely related to those in the NIOSH protocol, as might be expected, since they are trying to confirm the performance of the samplers over a similar range of environmental conditions. As in the NIOSH protocol, there are tests for desorption efficiency, uptake rate at different concentrations and for different time-periods, reverse diffusion, storage stability, wind velocity and orientation, humidity, and temperature. As in the NIOSH protocol, these factors are normally tested using a "high" and a "low" measure, either alone or in combination. Since there is little difference between workplace conditions in the U.S.A. and Europe, these "high" and "low" conditions in the two protocols are very similar. In general, the NIOSH test provides the more stringent conditions (e.g., 7.5 minutes up to 12 hours in the NIOSH uptake rate experiment versus 30 minutes and 8 hours in the CEN equivalent). In addition, for the majority of the experiments, the NIOSH protocol requires more samples to be taken for each data point (typically 10 rather than 6). The reverse diffusion test is one test that might be considered significantly different. A paper showing that the results of the tests are actually comparable has been submitted for publication.<sup>6</sup>

In addition, the CEN protocol requires tests for shelf-life and packaging integrity that have been carried out for one analyte (n-Hexane) only. The 575 Series passive sampler successfully passed these tests.

For the reasons given above, SKC considers the validations presented in these research reports to be at least sufficient to meet the requirements of the European Standards EN 838 and EN 482 for compliance monitoring. This conclusion is supported by a detailed comparison, which has been published.<sup>7</sup>

The CEN protocol supports the Bi-level Theory of Validation.



## Shelf-life Study on 575 Series Passive Samplers

**Protocol:** Four expired and two unexpired 575-001 samplers were exposed to an atmosphere of 100 ppm n-Hexane (2 x PEL) at 80% relative humidity (25° C) for 30 minutes, and then analyzed. This study was conducted in August 1995.

### Results:

Calculated atmosphere concentration:	106 ppm
Gas sample analysis concentration:	102 ppm (RSD = 7.0%)
Sorbent tube analysis concentration:	115 ppm (RSD = 3.2%)
Sampler analysis concentration: <sup>◇</sup>	
Sampler expired 12/92:	106 ppm
Sampler expired 4/94:	106 ppm
Sampler expired 10/94:	108 ppm
Sampler expired 10/94:	110 ppm
Sampler unexpired (7/96):	100 ppm
Sampler unexpired (7/96):	100 ppm

<sup>◇</sup> Based on 111.6% desorption efficiency

**Conclusion:** Samplers will perform as expected up to their expiration date.

## Packaging Integrity Study on 575 Series Samplers

**Protocol:** Six 575-001 samplers in unopened Tedlar® pouches were exposed to an atmosphere of 100 ppm n-Hexane (2 x PEL) at 80% relative humidity (25° C) for four hours, and then opened and analyzed.

### Results:

Calculated atmosphere concentration:	103 ppm
Gas sample analysis concentration:	104 ppm (RSD = 8.7%)
Sorbent tube analysis concentration:	103 ppm (RSD = 2.7%)

Sampler analysis: No detectable n-Hexane in any sampler.

Estimated LOD = 1.5 micrograms, equivalent to 0.125 ppm.

**Conclusion:** Packaging will prevent contamination of stored samplers.

## Scope of the Method

<b>Analyte:</b>	o-Chlorostyrene
<b>Matrix:</b>	Air
<b>Procedure:</b>	Adsorption on a 575-003 SKC passive sampler, desorption with 2 ml of carbon disulfide, and analysis by GC-FID.
<b>Exposure guidelines:</b>	ACGIH-TLV® (1994/95) 50 ppm TWA, 75 ppm STEL OSHA (1995) 50ppm TWA, 75 ppm STEL NIOSH (1995) none

### Validation range, recovery:

<u>Compound</u>	<u>Validation Range-ppm in air</u>	<u>Mean % Recovery</u>
o-Chlorostyrene	0.5 to 120	Variable (see desorption efficiency data)

**Detection limits:** Depending on the instrument, it is possible to determine at least 16 µg/per sampler with a relative standard deviation of less than 10% (see o-Chlorostyrene on 575-002).

**Humidity effects:** High humidity conditions (80% RH at 25° C) did not affect the recovery, collection, or storage of o-chlorostyrene on the 575-003 passive sampler.

**Storage effects:** The passive sampler can be stored for at least 21 days at room temperature or in a freezer.

**Interferences:** Any compound that has the same retention time as o-chlorostyrene will interfere with analysis.

**Validation completion date:** January 1995

### Physical properties:

<u>Mol. Weight (g/mole)</u>	<u>Boiling Pt. at 760 mm Hg</u>	<u>Density (g/ml)</u>
138.6	188.7° C	1.08

# Background

## History of Methodology

Previous methodologies have used PCB activated charcoal in a sampling tube.

## Research Purpose

The present work was to evaluate and validate the SKC 575 Series passive sampler containing Anasorb 727 as a method for sampling o-chlorostyrene. The passive sampler was validated over a concentration range of 20 to 400 ppm. Critical parameters included analytical recovery, concentration, relative humidity, and storage stability.

## Experimental

Ninety-seven percent o-chlorostyrene and HPLC-grade carbon disulfide (99.9%) were obtained from Aldrich Chemical Company. The 575 Series passive sampler containing Anasorb 727 (SKC Cat. No. 575-003) and the Anasorb 727 tubes used for atmosphere calibrations (SKC Cat. No. 226-81) are available from SKC, Inc.

A dynamic atmosphere generation apparatus was used to generate precise concentrations of o-chlorostyrene in air for exposure of the passive samplers. The system is described in Appendix A and Figure 1. The atmosphere was fed into an exposure test chamber. The passive samplers were exposed on a rotating bracket inside the test chamber to simulate wind velocity and orientation.

**Analytical recoveries** for the passive samplers were conducted by injecting a known amount of o-chlorostyrene (as a CS<sub>2</sub> solution) into the back of each sampler. The passive samplers were capped, allowed to equilibrate overnight, and analyzed the next day to determine analytical recovery or desorption efficiency. The tests were conducted at mass loadings equivalent to an 8-hour Time-Weighted Average (TWA) sample (6.24 L based on a calculated sampling rate of 13.0 ml/min) at 0.01, 0.1, 0.5, 1.0, and 2.0 PEL under dry conditions. Because of the large differences between the calculated and experimental sampling rates, the results have been adjusted to show the true equivalent 8-hour TWA fraction of the PEL.

**The sampling rate, analytical recovery, and storage stability** experiments on the passive sampler were conducted under dynamic conditions in the test chamber described above. In the storage stability study, recovery is referred back to the reference samples analyzed on day 1.

The passive samplers were desorbed (in situ) with 2 ml of carbon disulfide and shaken on a flatbed shaker for 30 minutes. All extracts were transferred to autosampler vials and analyzed by flame ionization gas chromatography. A chromatogram with analytical conditions is shown in Appendix A, Figure 2.

## Sampling Rate Determination

Sampling rates can be determined by one of several statistical methods from the experimental data and they differ by only a small amount. Any bias taken is toward the protection of the worker.

We use the Time-Weighted Average from one to eight hours where results fall within NIOSH criteria.

We constantly review our data and conduct experimental work to provide the most precise sampling rate. This rate may differ slightly from previously published sampling rates. Use the rate listed in this report.

# Analytical Recovery

## o-Chlorostyrene

### NIOSH Requirements

#### Experimental Design

Spike 16 samplers, 4 at each of 4 concentration levels (0.1, 0.5, 1.0 & 2.0 x STD). Equilibrate about 12 h and analyze. See Analytical Recoveries on p. 11 for explanation.

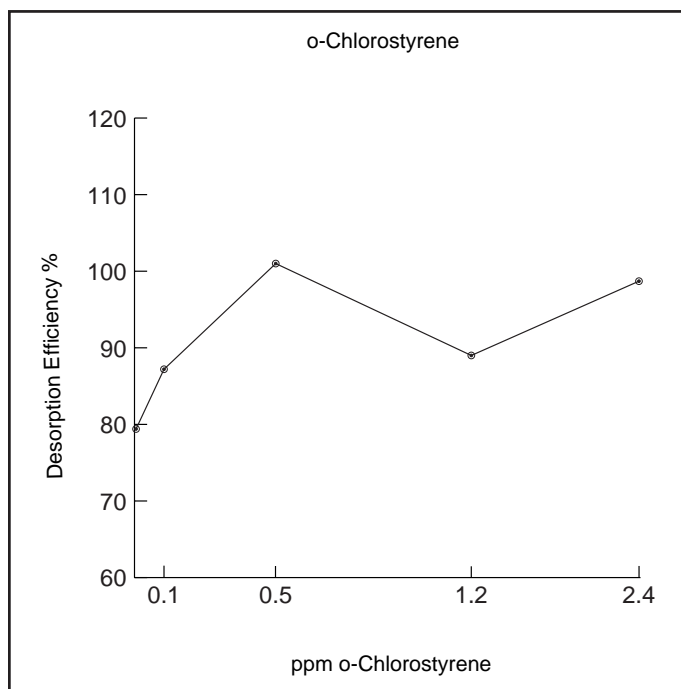
#### Interpretation of Results

The 3 higher levels require  $\geq 75\%$  recoveries with  $S_r \leq 0.1$ .

### Results

PEL Level	Spike (µg)	Recovery (µg)	Recovery %	Mean	RSD %
00.1	16.2	15.8	97.3	79.4	15.9
		11.4	70.3		
		13.0	79.9		
		11.4	70.2		
0.1	162.0	141.5	87.3	87.2	4.4
		134.7	83.2		
		150.6	93.0		
		137.8	85.1		
0.5	810.0	823.1	102.0	101	1.4
		808.6	99.8		
		805.9	99.5		
		830.0	103.0		
1.2	1620	1176.0	72.6	89.0	17.3
		1669.0	103.0		
		1481.0	91.4		
		3248.0	100.2		
2.4	3240	3166.0	97.7	98.7	1.1
		3178.0	98.1		
		3201.0	98.8		

Overall mean 91.19



# Sampling Rate and Capacity

## o-Chlorostyrene

### NIOSH Requirements

#### Experimental Design

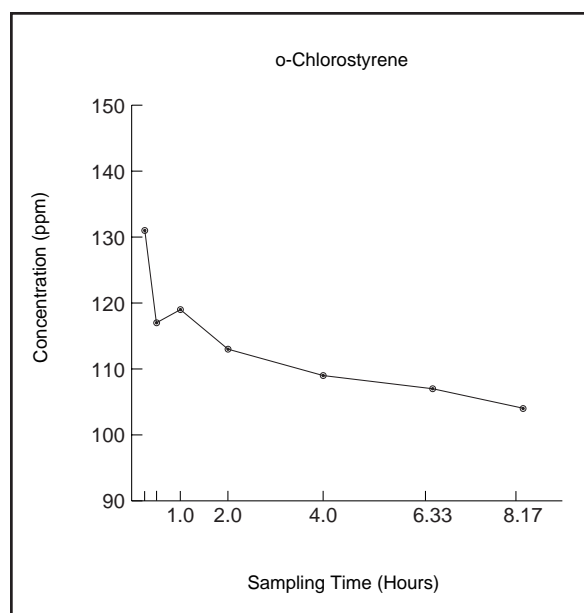
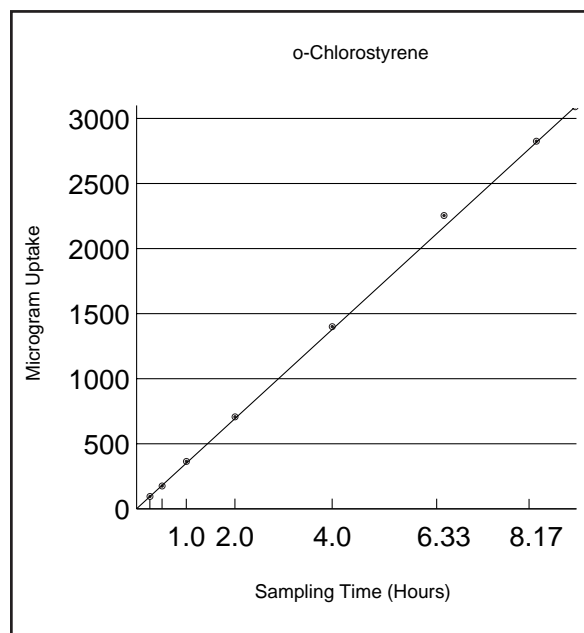
Expose samplers (4 per time period) for 1/8, 1/4, 1/2, 1, 2, 4, 6, 8, 10 and 12 h to 2 x STD, 80% RH and 20 cm/s face velocity. Plot concentration vs. time exposed. Determine MRST and SRST

#### Interpretation of Results

Verify sampling rate. State useful range at 80% RH and 2 x STD. Capacity - sample loading corresponding to the downward break in conc. vs time curve from constant concentration. SRST-time linear uptake rate achieved. MRST - 0.67 x capacity (1 analyte). MRST-0.33 x capacity (multi-analyte).

### Results

Time (hrs)	Uptake µg	Mean µg	RSD %	DE Corr µg	Conc. (ppm)
0.25	102.8				
	95.3				
	92.0				
	90.7	95.2	5.7	109.4	131.0
0.50	172.6				
	174.1				
	181.1				
	174.7	175.6	2.1	195.1	117.0
1.0	382.4				
	363.9				
	352.0				
	359.2	364.3	3.6	396.0	119.0
2.0	742.9				
	704.2				
	684.2				
	696.3	706.9	3.6	752.0	113.0
4.0	1386.0				
	1394.0				
	1479.0				
	1343.0	1400	4.1	1459.0	109.0
6.33	2203.0				
	2302.0				
	2260.0				
	2251.0	2254	1.8	2254.0	107.0
8.17	2841.0				
	2573.0				
	2821.0				
	3064.0	2825	7.1	2825.0	104.0



The mean sampling rate was 9.8 ml/min (3.33 µg/ppm/hr) and was calculated as a weighted average of the 1, 2, 4, 6, & 8-hour exposure periods from these results combined with those of the 575-002 sampler based on a mean concentration of 103 ppm.

# Storage Stability

## o-Chlorostyrene

### NIOSH Requirements

#### Experimental Design

Expose 3 sets of samplers (10 per set) at 80% RH, 1 x STD, and 0.5 x MRST. Analyze first set within 1 day, second set after 2 weeks storage at room temperature, and third set after 2 weeks storage at

about 5° C.

#### Interpretation of Results

Require ≤ 10% difference at the 95% CL between means of stored sampler sets and set analyzed within 1 day.

### Results

Room Temperature			Freezer			
Storage Conditions	Des. Eff. Corr. (µg)	Mean µg	Storage Conditions	Des. Eff. Corr. (µg)	Mean µg	
Day 1 for Day 7	974.8	948.1	Day 7	924.2	887.2	
	921.4			830.1		
Day 7	863.4	900.5		907.4		
	863.2					
	975.3					
Day 1 for Day 14	701.9	704.4	Day 14	790.5	775.9	
	707.0			772.8		
Day 14	797.1	723.7		764.3		
	713.1					
	661.0					
Day 1 for Day 21	900.0	885.1	Day 21	766.5	837.1	
	870.2			810.9		
Day 21	767.7	849.8		933.8		
	898.4					
	883.2					

**Conclusion:** There is no significant loss (<10%) of sample during storage at room or freezer temperatures.

## Appendix A

# Atmosphere Generation Apparatus

The instrument is designed to expose a known concentration of a chemical hazard to a passive sampler under controlled conditions of: 1. Concentration, 2. Temperature, 3. Humidity, 4. Wind Velocity Effect, 5. Time, and 6. Up to four multicomponent hazards.

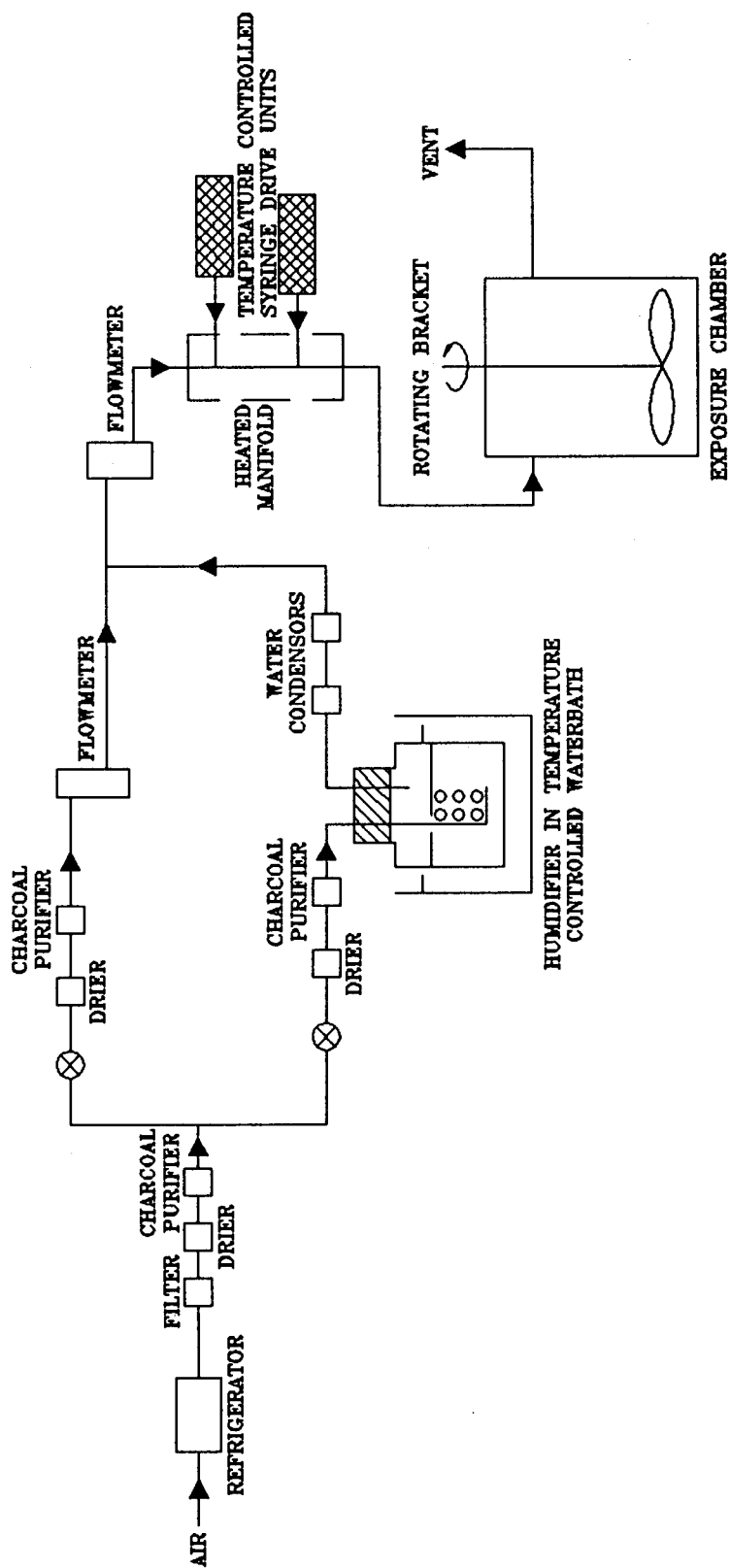
### Description

The instrument consists of:

1. An exposure chamber in which the wind velocity effects are controlled by internal rotating holders.
2. An air supply and purification train such that dry air is blended with saturated air under desired temperature conditions so as to provide air at a known flow and selectable humidity.
3. An injection system composed of precision motor driven syringes in which 1 to 4 chemical hazards can be injected into the flow system and in which the temperature of the injectors is closely controlled.
4. An electrical control system that controls the entire instrument operation.
5. The chamber concentration can be verified by either solid sorbent sampling tubes actively sampled or by gas analysis of the gas phase. The particular verification method used will depend on the analyte of interest.

Means are also included to check the relative humidity.

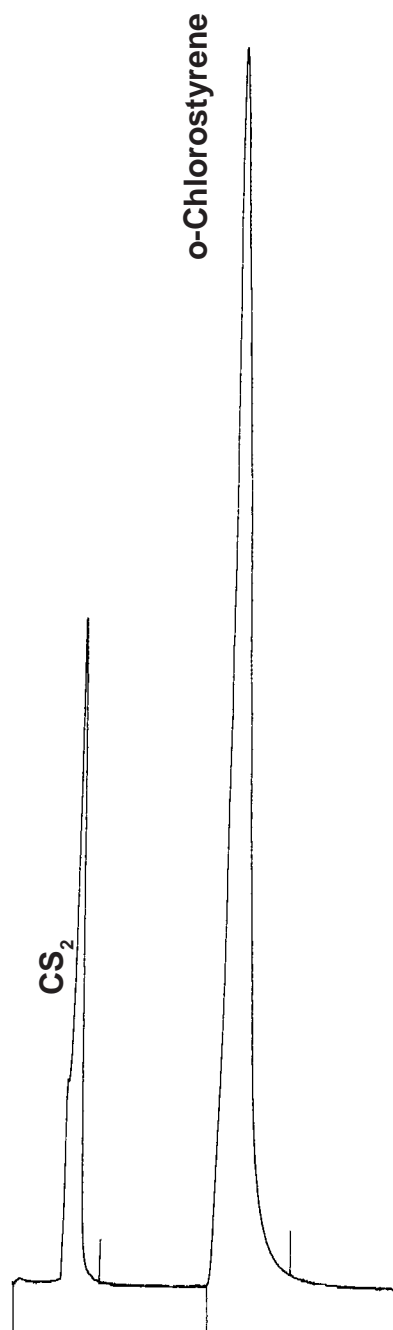
Figure 1  
Atmosphere Generation Apparatus





**Figure 2**  
**Analytical Instrument**

**Sample Chromatogram**  
**o-Chlorostyrene in CS<sub>2</sub>**



**GC Conditions**

**Column:** 10' x 1/8" 10% SP-1000  
on 80/100 Supelcoport®

**Temperatures:** Column: 170° C  
FID: 150° C

**Carrier gas:** N<sub>2</sub> at 20 ml/min

**Injection:** 1µL

## Abbreviations

C	Celsius
CL	Confidence Level
cm	centimeter
ml	milliliter
min	minute
g	gram
GC-FID	Gas Chromatography - Flame Ionization Detector
h	hour
L	Liter
LOD	Limit of Detection
MRST	Maximum Recommended Sampling Time
N.S.	Not Significant
PEL	Permissible Exposure Limit
RH	Relative Humidity
TLV	Threshold Limit Value
TWA	Time-Weighted Average
RSD	Relative Standard Deviation
SD	Standard Deviation
SRST	Shortest Recommended Sampling Time
STD	appropriate exposure standard (OSHA PEL, ACGIH TLV, or NIOSH recommended standard)
S	Second
$S_r$	pooled relative standard deviation
V	Volume

## Trademarks

Anasorb is a registered trademark of SKC Inc.

Tedlar is a registered trademark of DuPont Corporation.

Porapak is a registered trademark of Waters Associates, Inc.

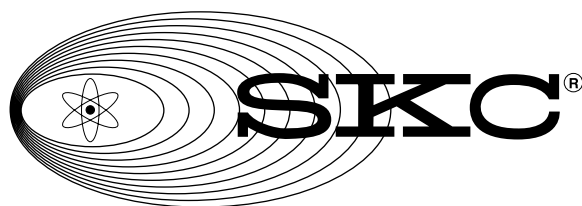
Supelcoport is a registered trademark of Supelco, Inc.

TLV is a registered trademark of ACGIH.

## References

1. Cassinelli, M.E., Hull, R.D., Crable, J.V., and Teass, A.W., "Diffusive Sampling: An Alternative to Workplace Air Monitoring," *NIOSH Protocol for the Evaluation of Passive Monitors*, A. Berlin, R.H. Brown, and K.J. Saunders (Royal Society of Chemistry, London) (eds.), 1987, pp. 190-202.
2. Brown, R.H., Harvey, R.P., Purnell, C.J., and Saunders, K.J., "A Diffusive Sampler Evaluation Protocol," *Am. Ind. Hyg. Assoc. J.*, Vol. 45, 1984, pp. 67-75.
3. "Workplace Atmospheres - General Requirements for the Performance of Procedures for the Measurement of Chemical Agents," CEN/TC137/WG2 (1993) EN 482, Comité Européen de Normalisation, Brussels, Belgium.
4. "Workplace Atmospheres - Diffusive Samplers for the Determination of Gases and Vapours - Requirements and Test Methods," CEN/TC137/WG2 (1995) prEN 838, Comité Européen de Normalisation, Brussels, Belgium.
5. Guild, L.V., Myrmel, K.H., Myers, G., and Dietrich, D.F., "Bi-level Passive Monitor Validation: A Reliable Way of Assuring Sampling Accuracy for a Larger Number of Related Chemical Hazards," *Appl. Occup. Environ. Hyg.*, Vol 7, No. 5, May 1992, pp. 310-317.
6. Harper, M., Fiore, A.A., Fiorito, D.L., and O'Lear, C., "Comparison of the Tests for Non-ideal Behaviour by Reverse Diffusion in the NIOSH and CEN Diffusive Sampler Evaluation Protocols," submitted to *Am. Ind. Hyg. Assoc. J.*, (1996).
7. Harper, M., Guild, L.V., "Experience in the Use of the NIOSH Diffusive Sampler Evaluation Protocol," *Am. Ind. Hyg. Assoc. J.*, Vol. 57, 1996, pp. 1115-1123.

**Validation of o-Chlorostyrene  
using  
SKC Passive Sampler  
575-003**



**SKC Inc.  
863 Valley View Road  
Eighty Four, PA 15330**

# Contents

Abstract .....	1
Importance of Passive Sampler Validation .....	2
Summary of NIOSH Validation Protocol .....	4
Bi-level Validation .....	6
Comments on the Relationship Between the NIOSH and CEN Diffusive Sampler Evaluation Protocols .....	8
Scope of the Method .....	10
Background .....	11
Analytical Recovery .....	12
Sampling Rate and Capacity .....	13
Storage Stability .....	14
Appendix A      Atmosphere Generation Apparatus .....	15
Figure 1.        Atmosphere Generation Apparatus .....	16
Figure 2.        Analytical Instrument .....	17
Abbreviations, Trademarks .....	18
References .....	19